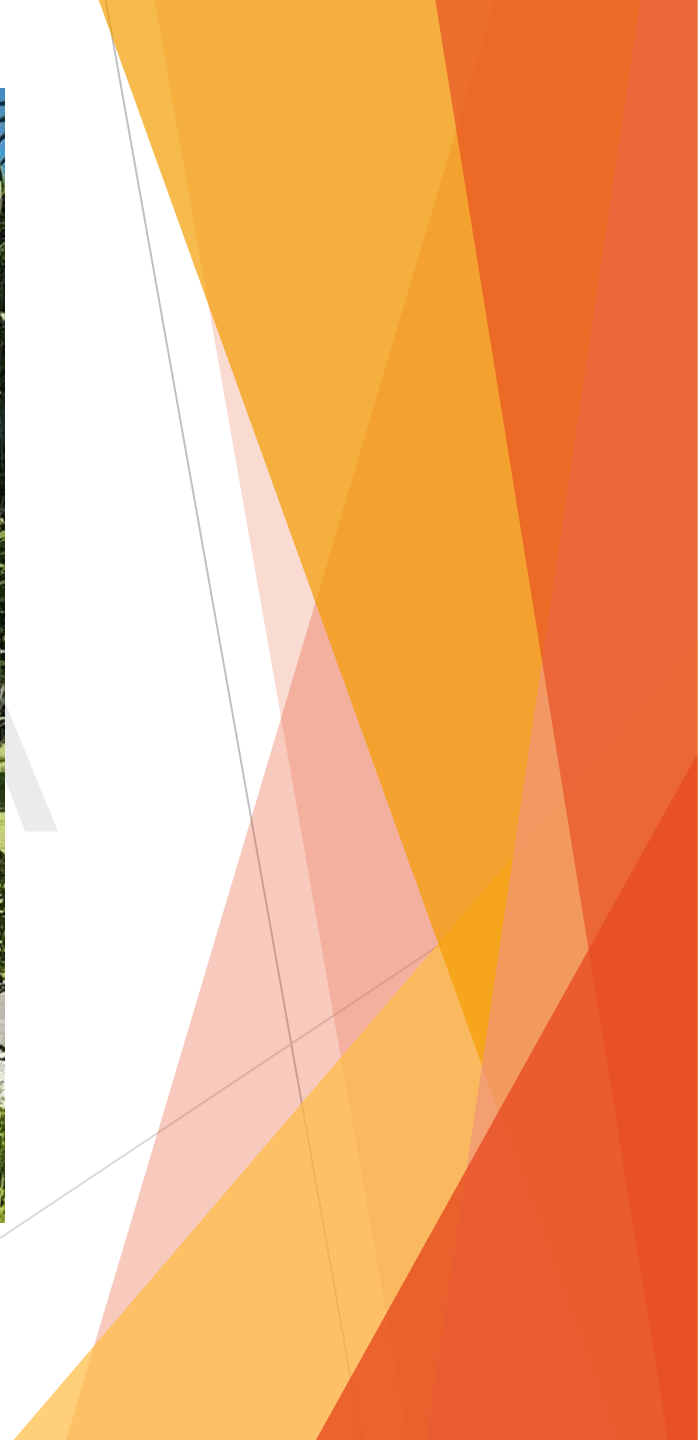


Anticyclonic Eco Kit 66 m²

Easy unpacking and assembly!

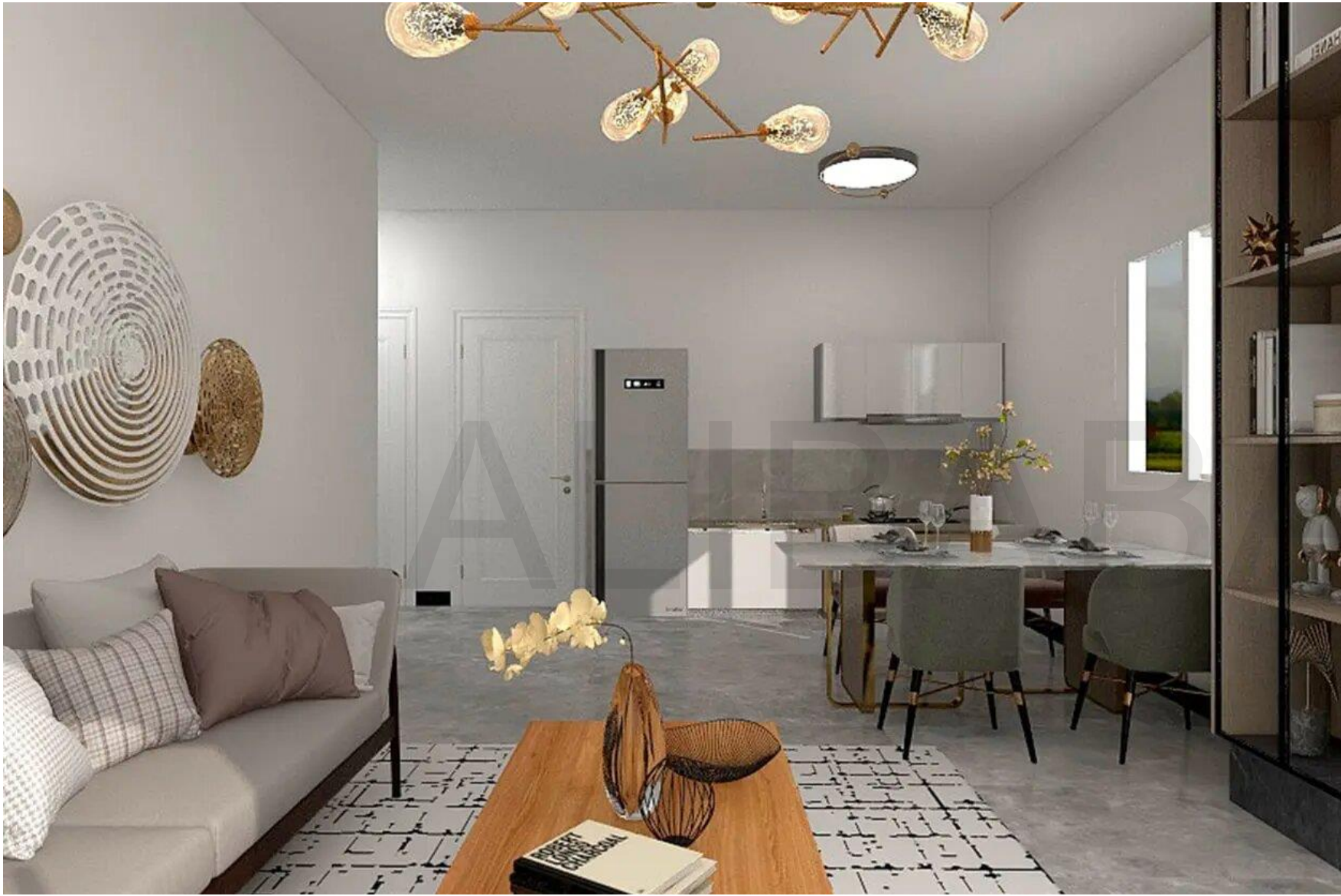




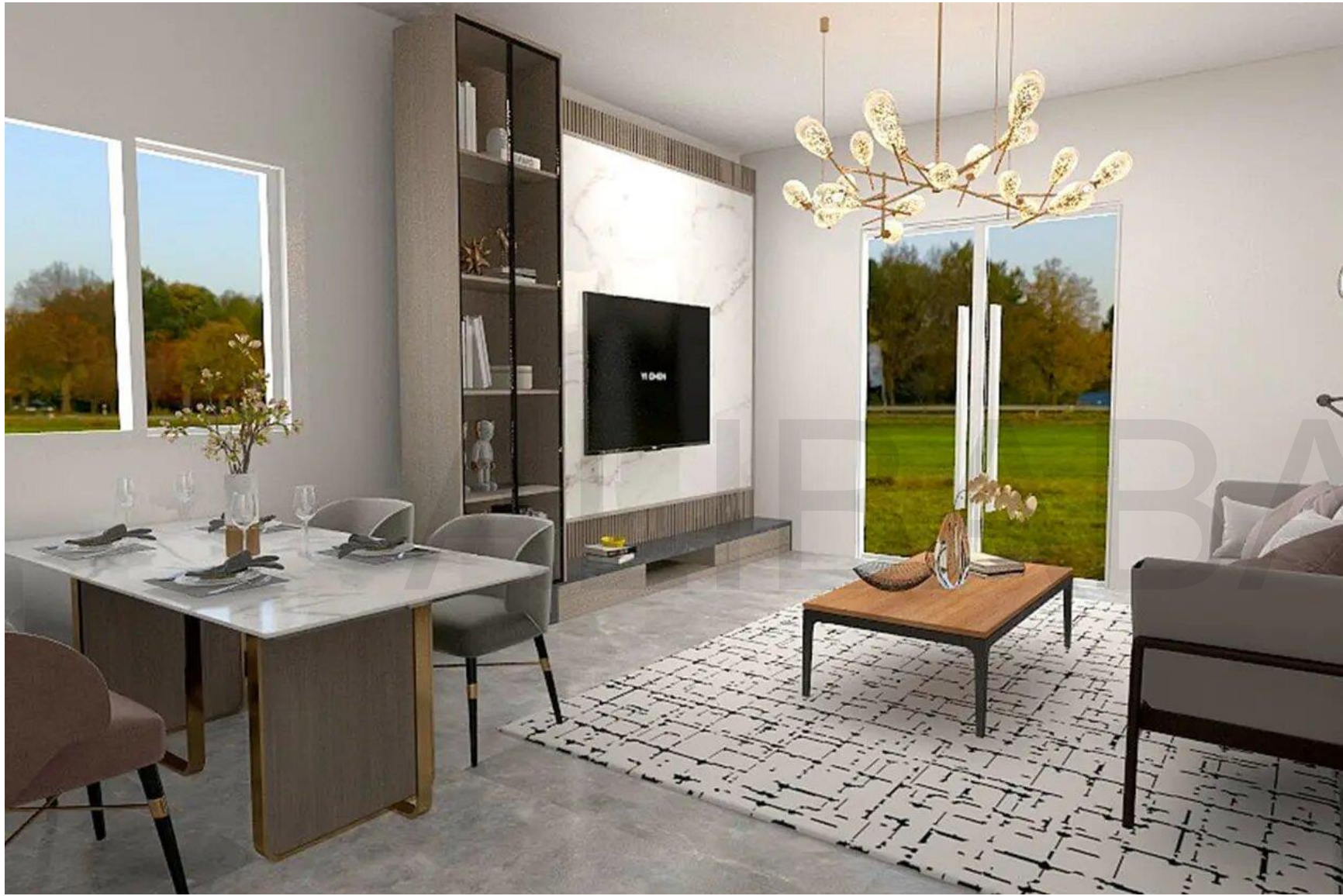




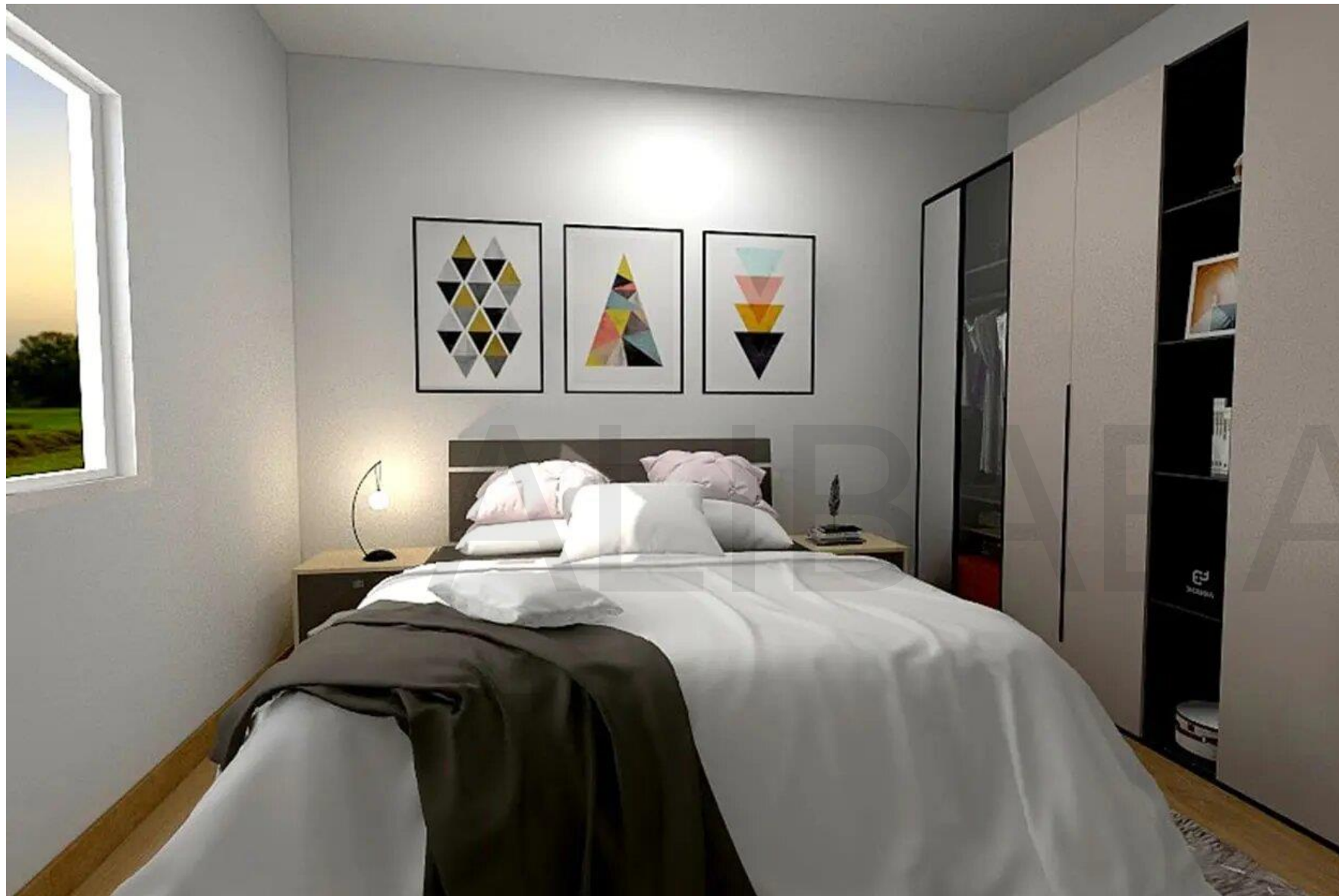




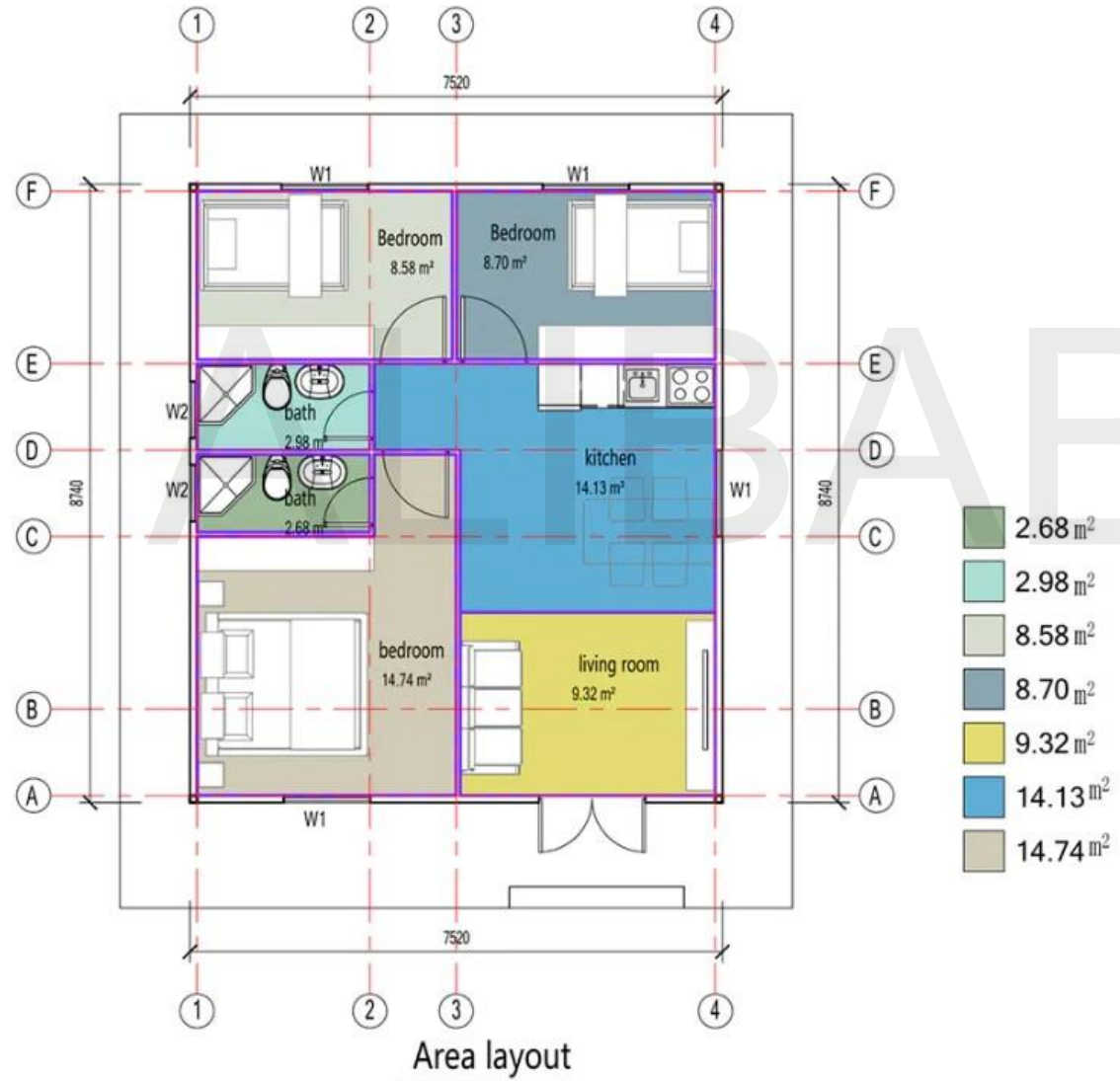


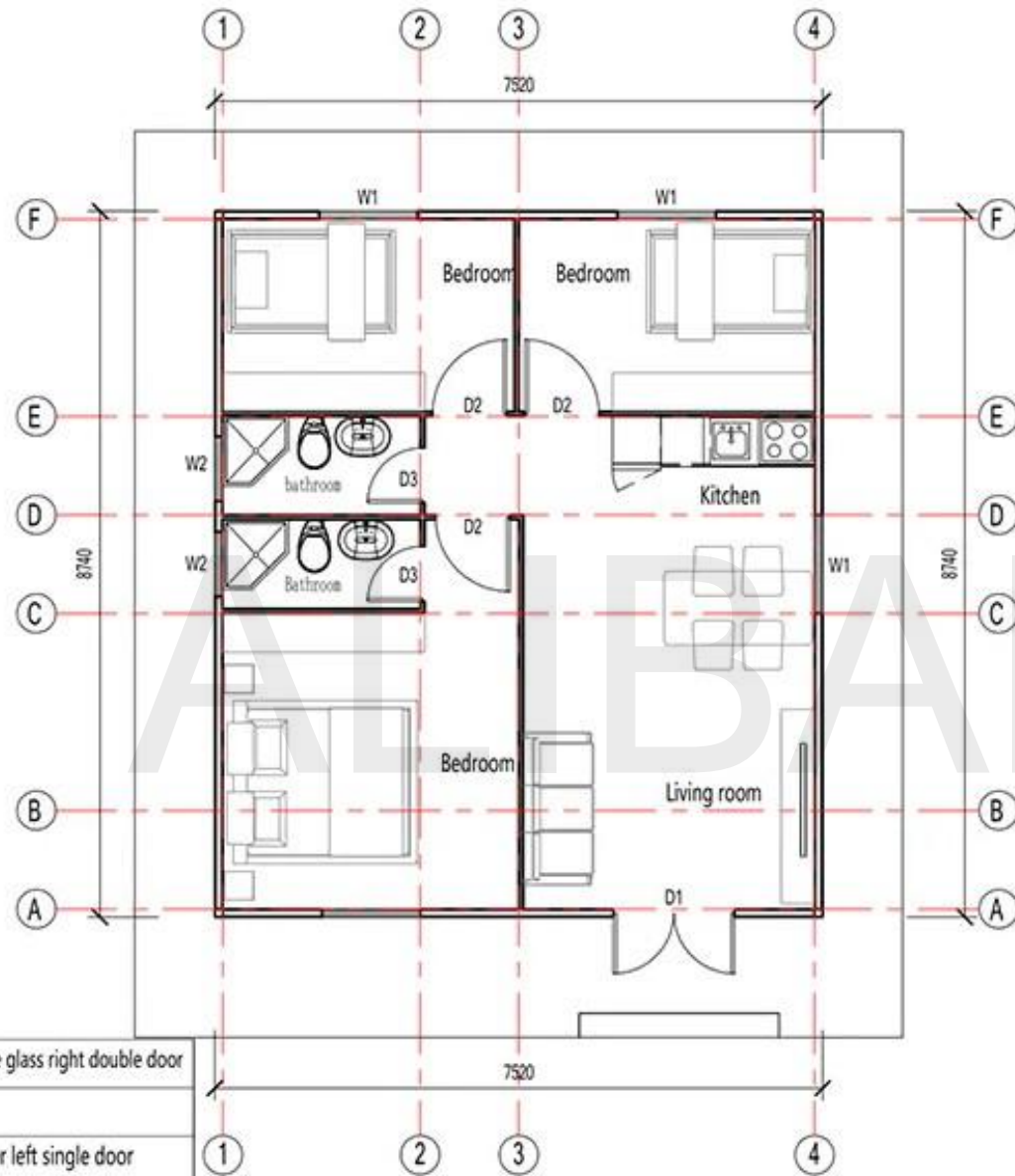






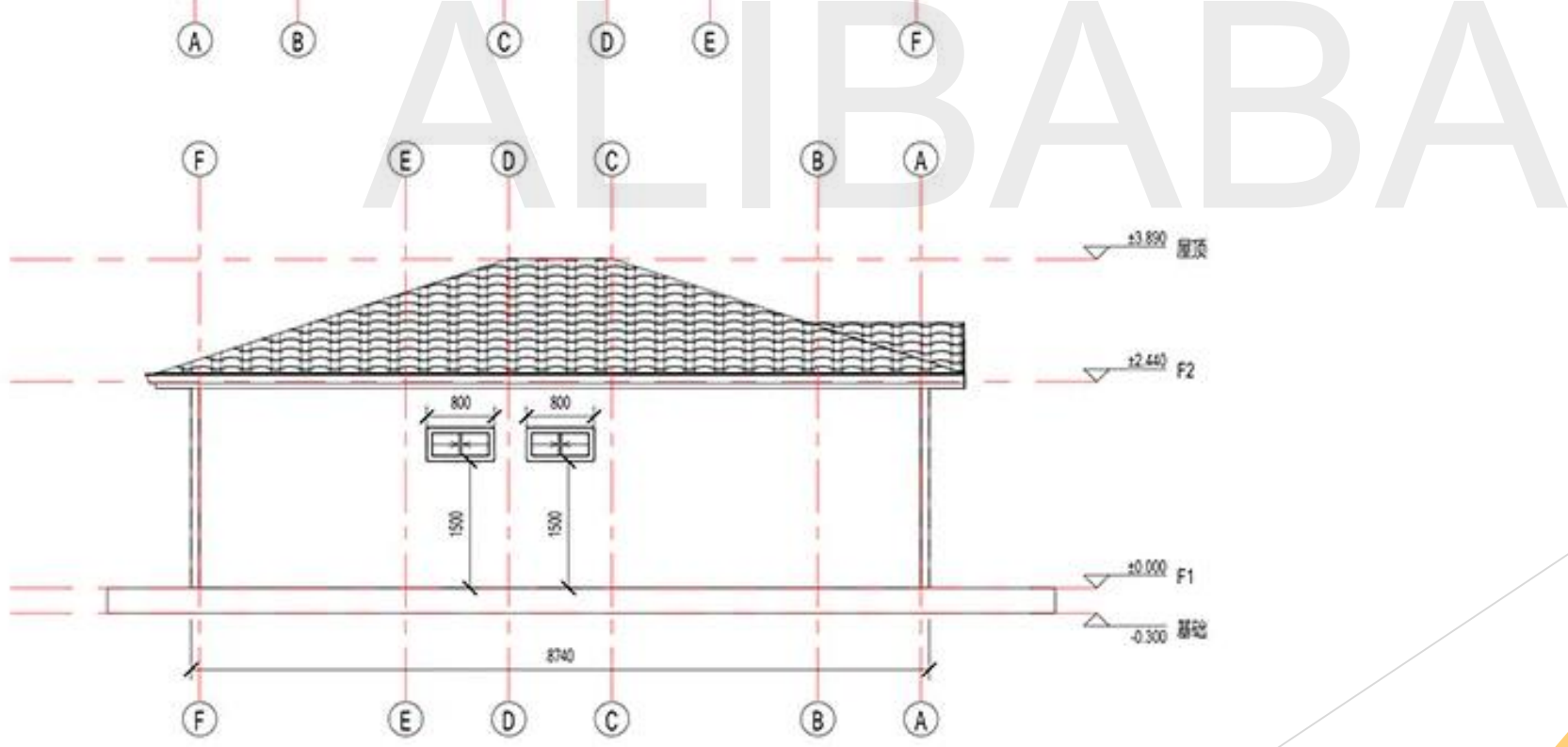
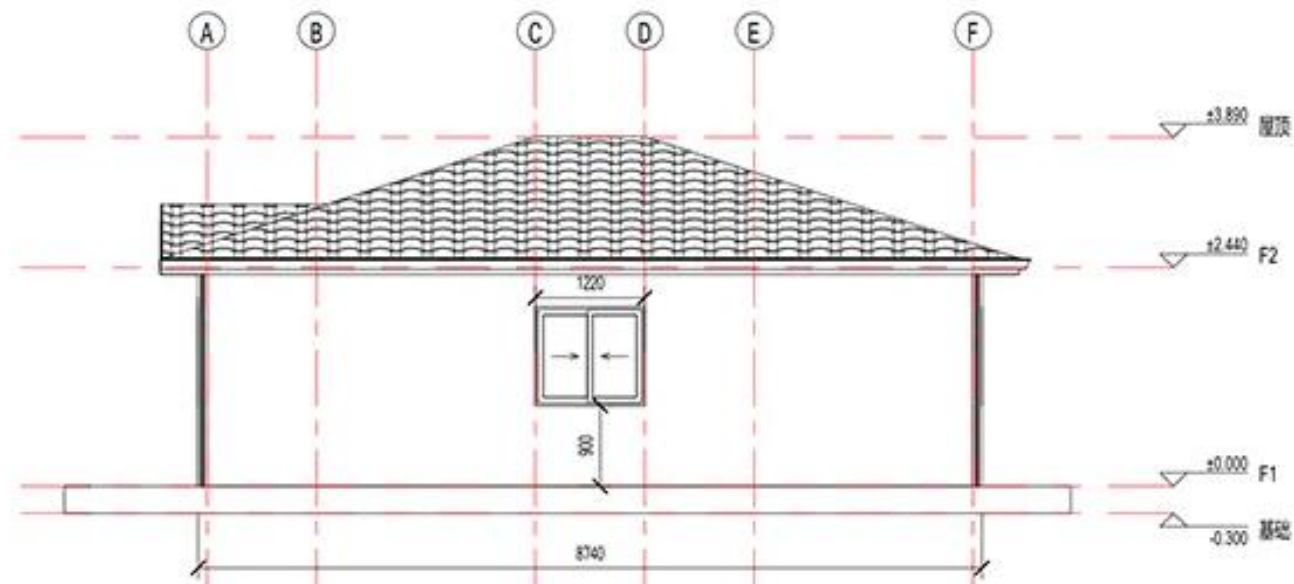
Plans



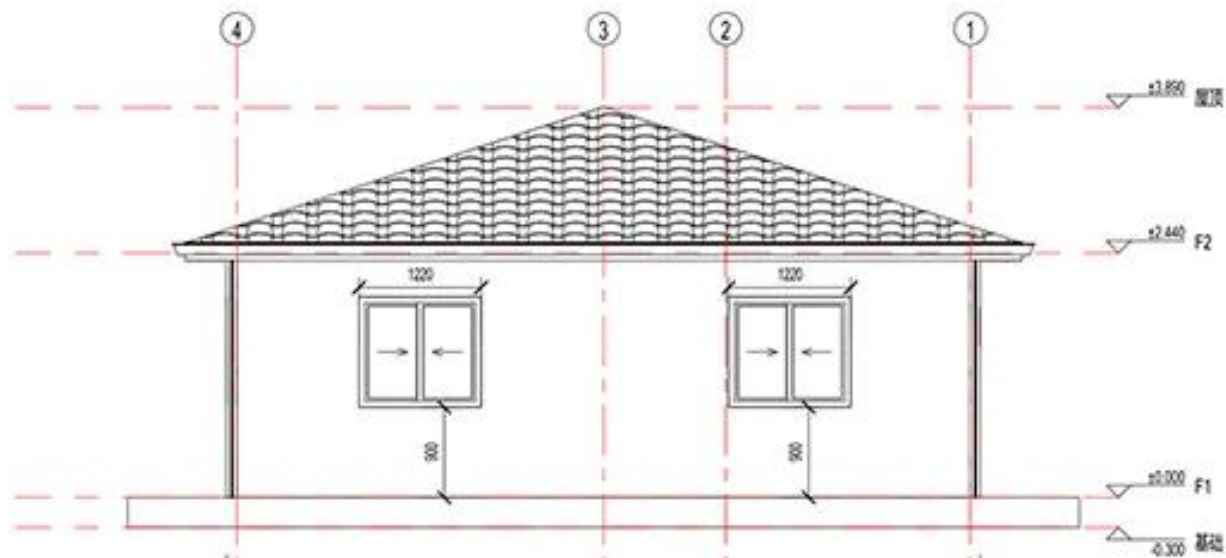


D1	1500×2100 Aluminum alloy double glass right double door
D2	920×2035 steel open door
D3	680×2035 Aluminum alloy inner left single door
W1	1220×1100 aluminum alloy sliding window
W2	800×400 aluminum alloy sliding window

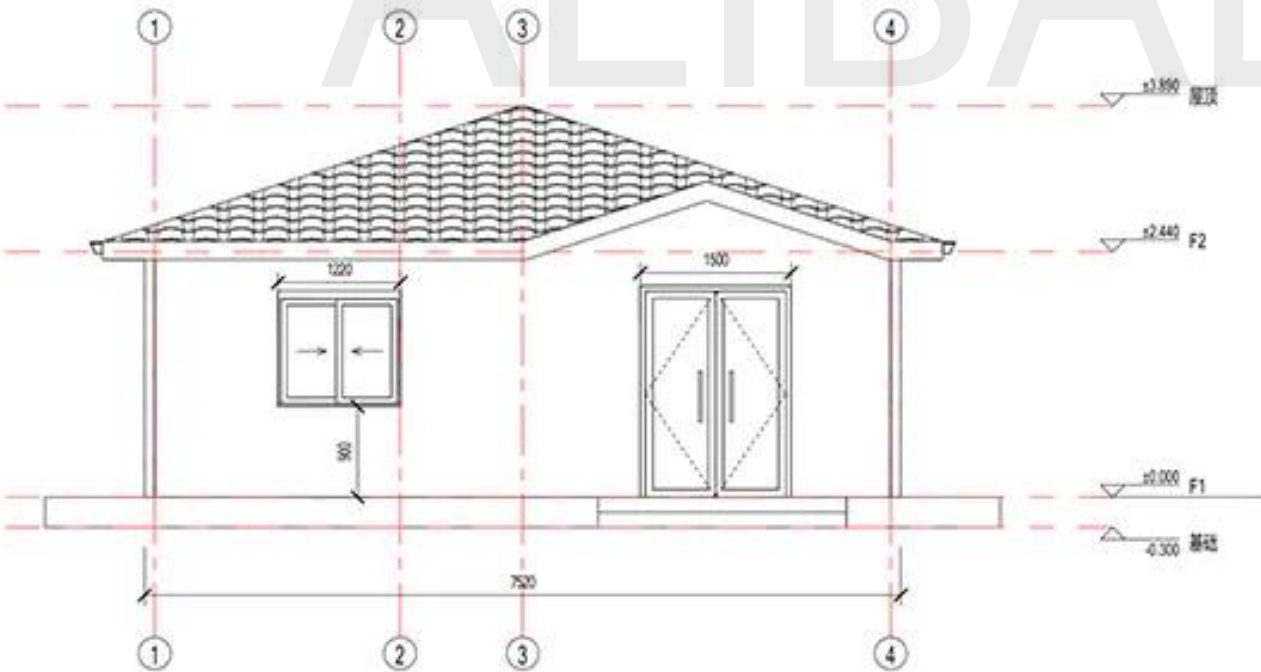
Ground Floor



ALIBABA



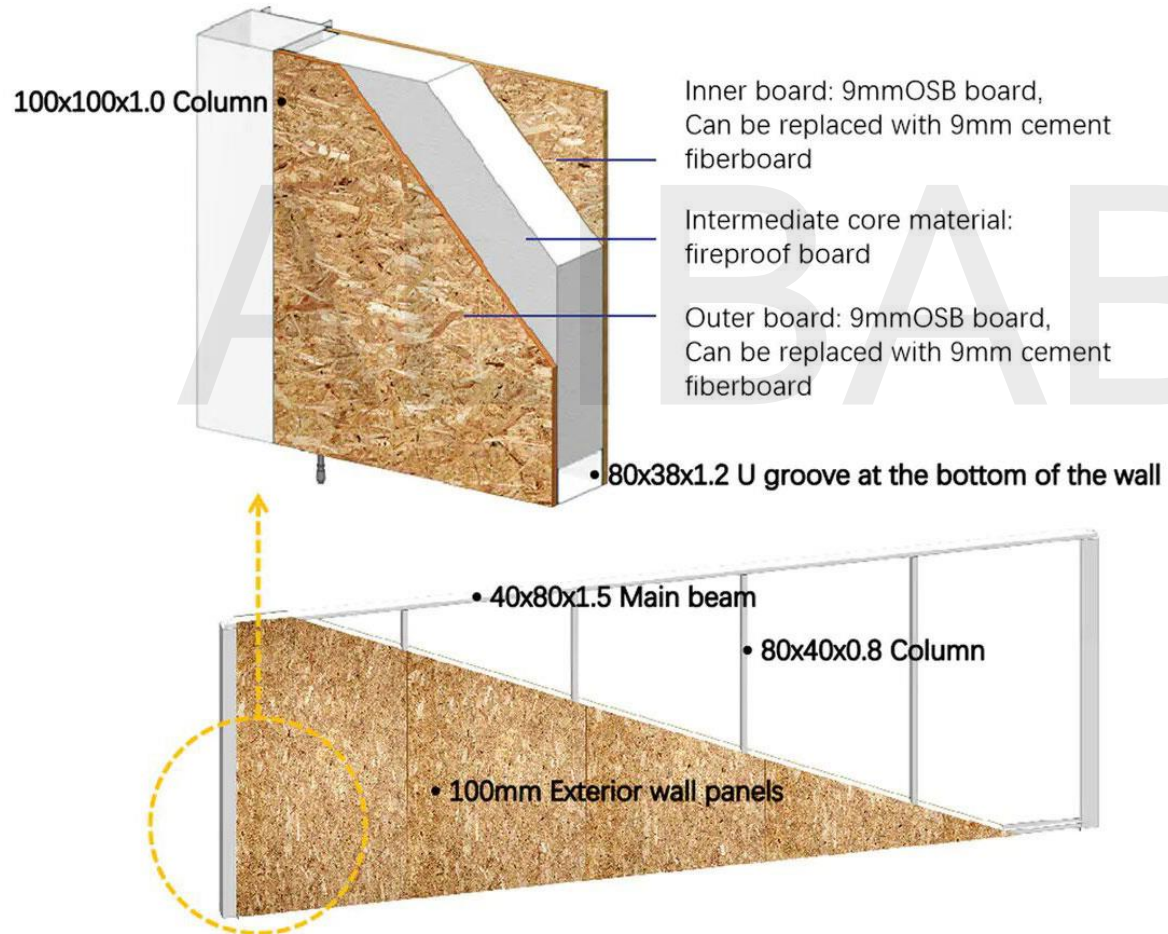
ALIBABA



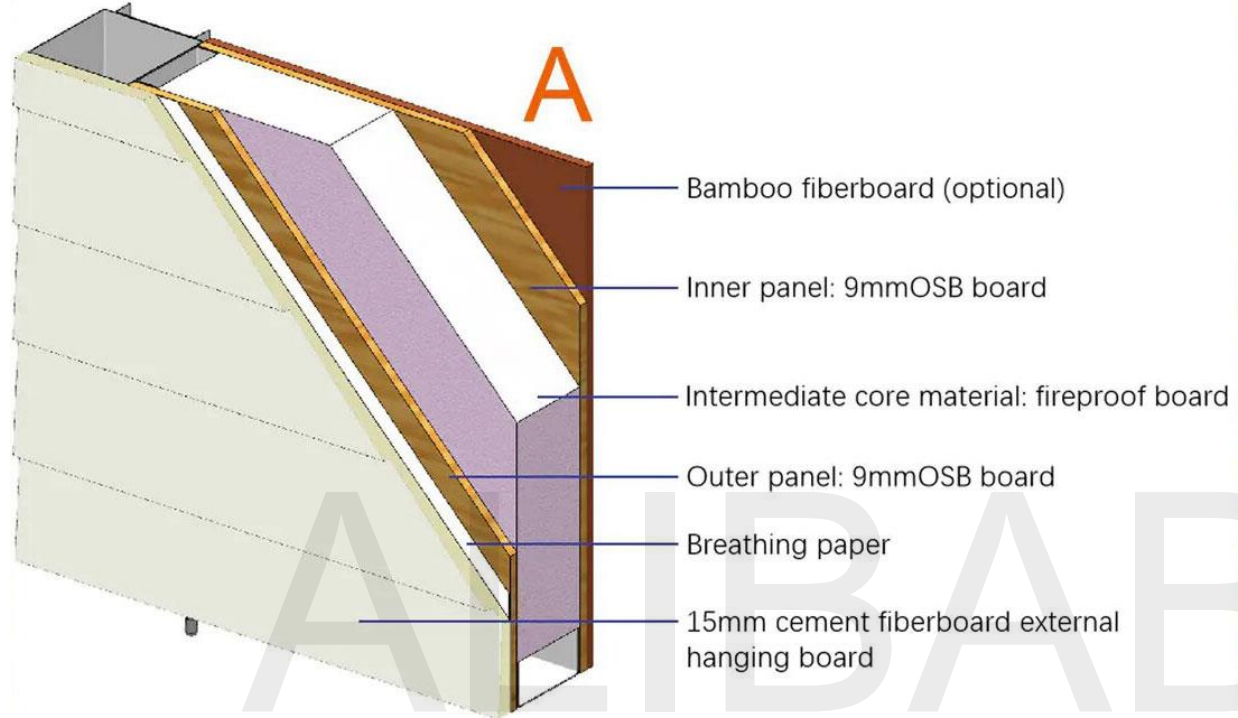
Specifications

WALL SYSTEM

Frame structure: frame + shear plate

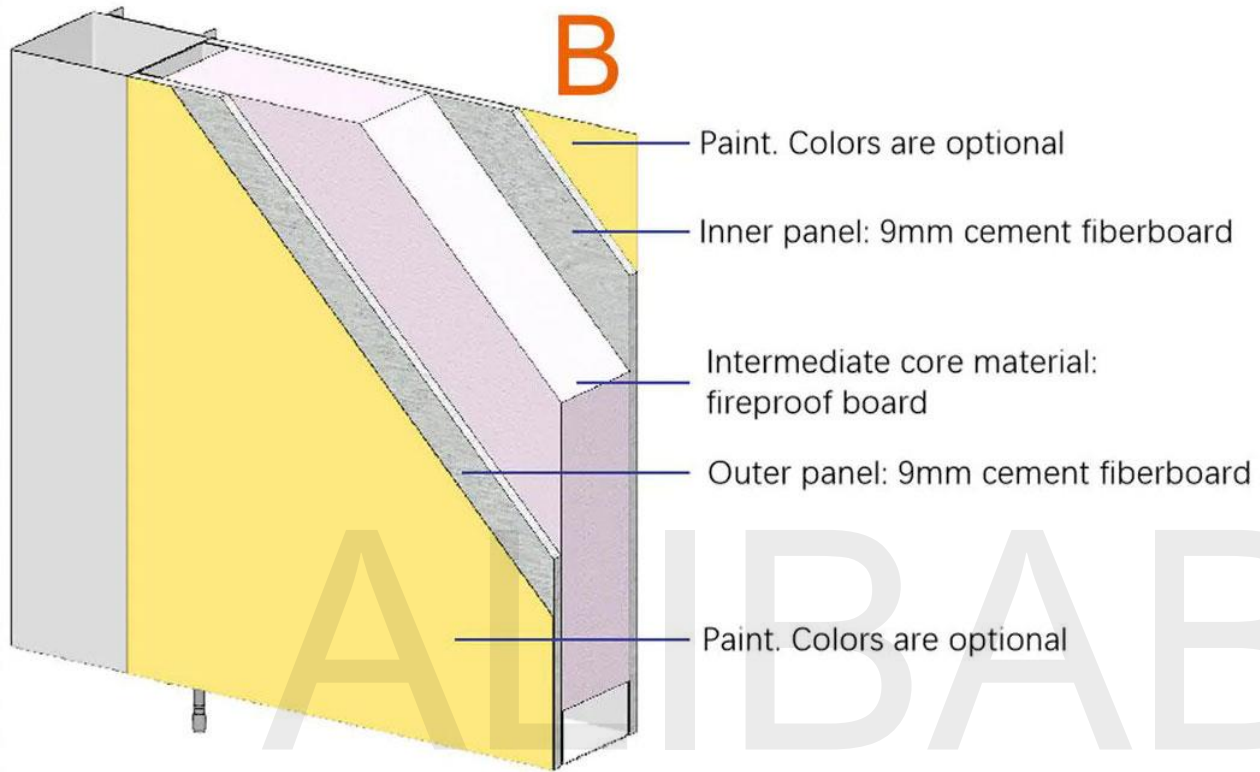


With Optional Materials

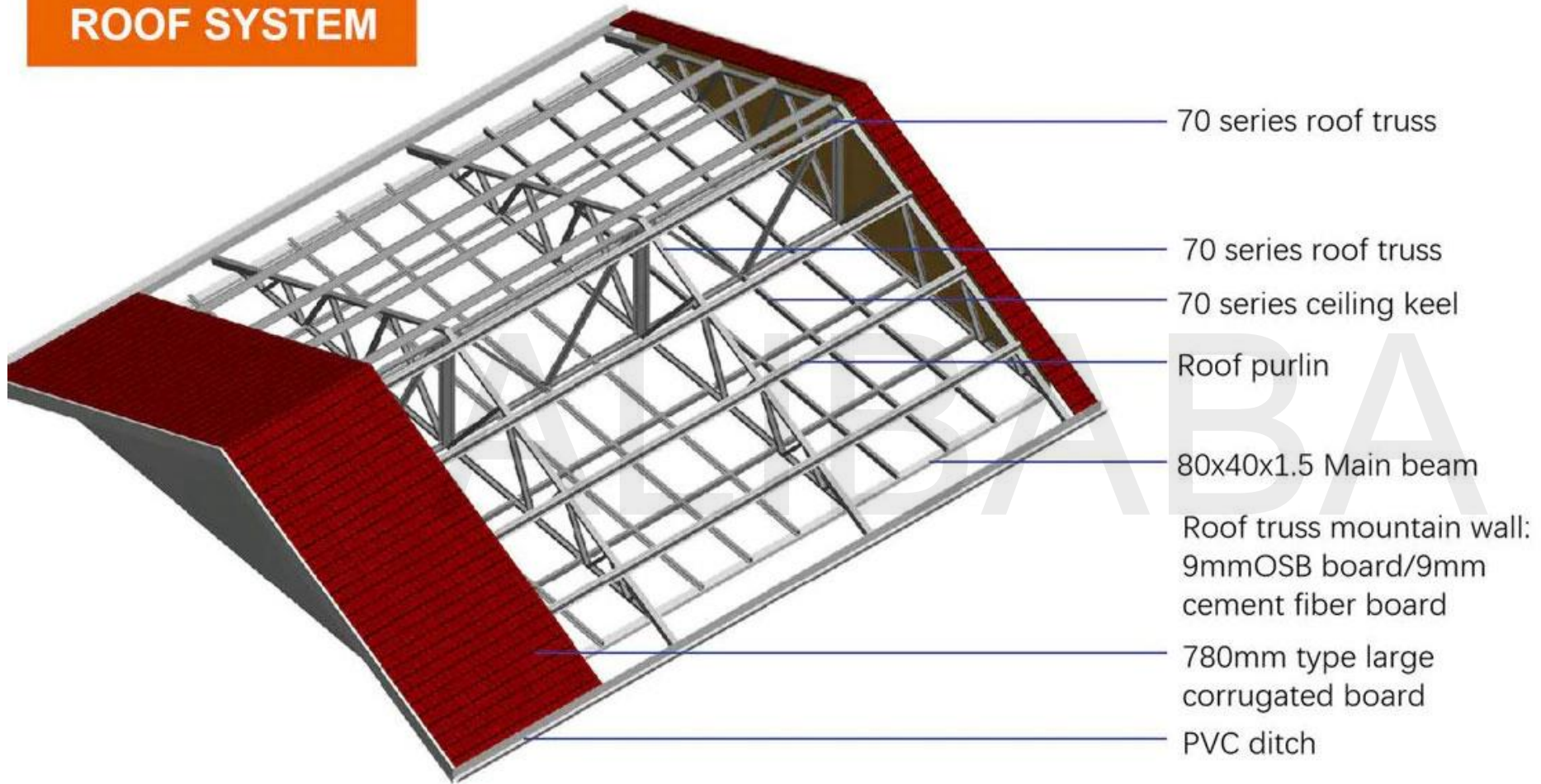


Note: The interior wall of the bathroom is made of waterproof coating + waterproof bamboo fiberboard (marble pattern)

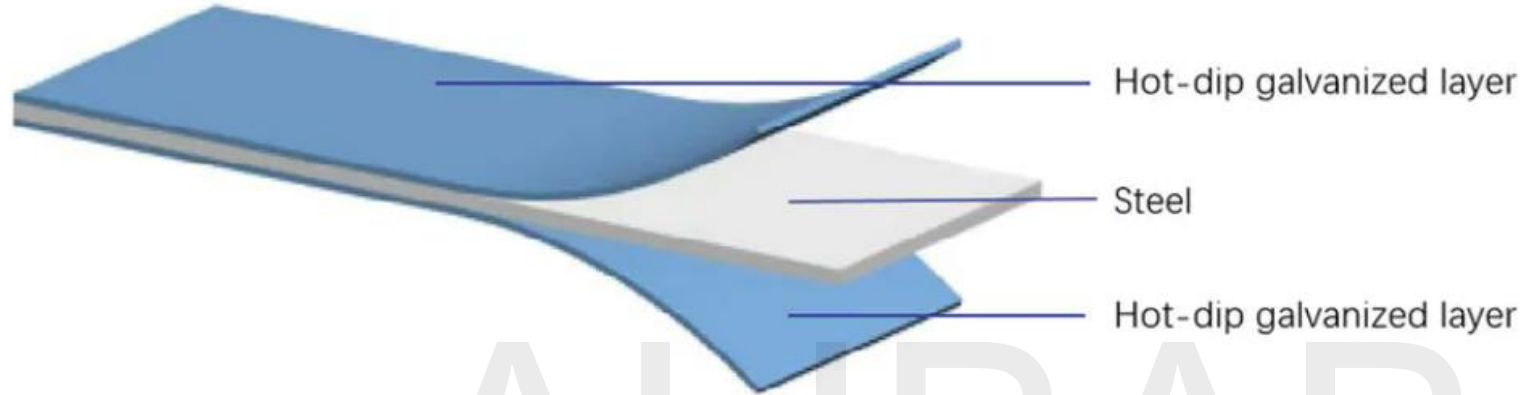




ROOF SYSTEM



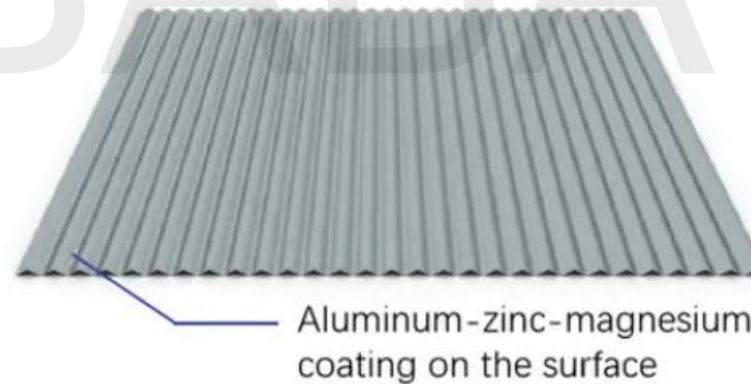
Hot-dip galvanized steel



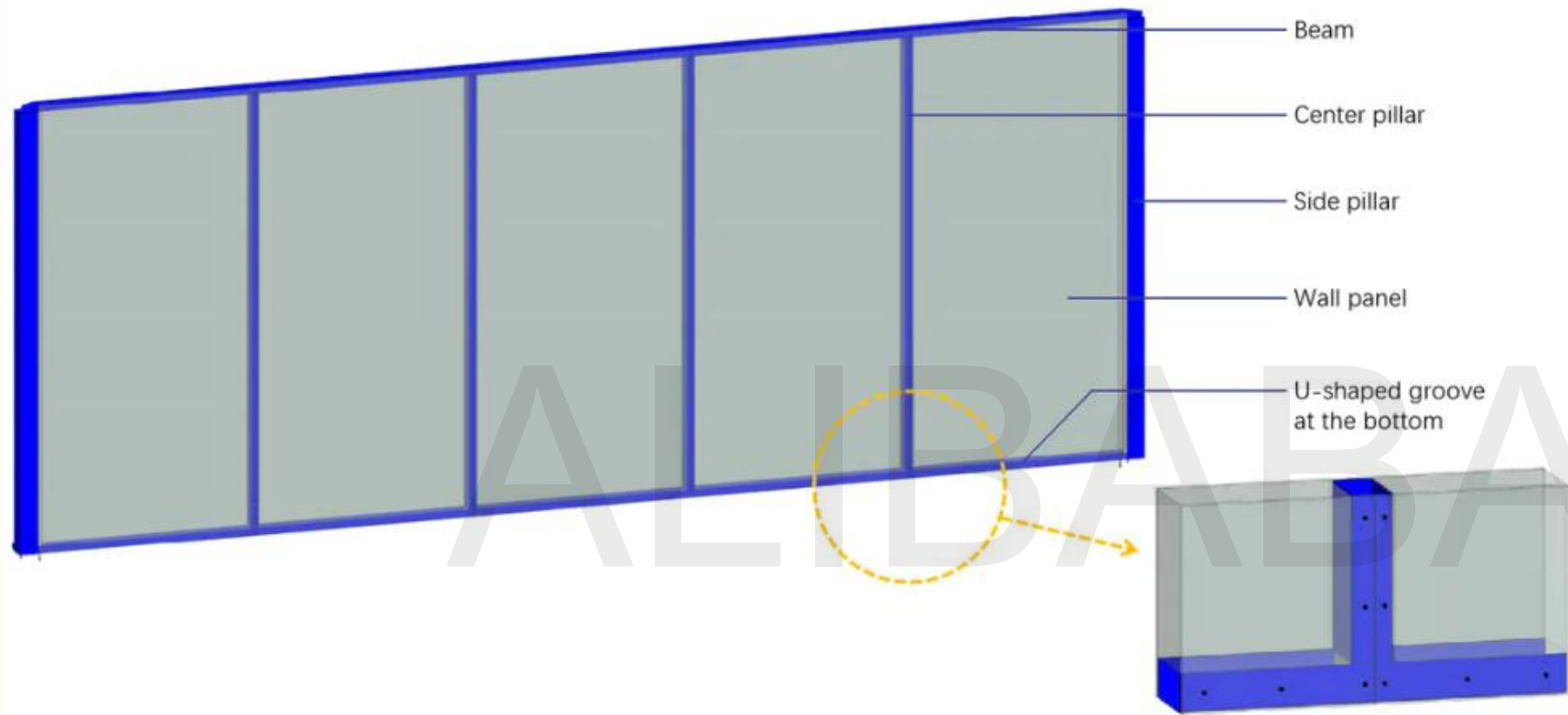
The overall frame of the building is galvanized and sprayed: the hot-dip galvanized coating is even, the adhesion is strong, and the anti-corrosion effect and service life are the best of all methods.

The surface of the roof color steel plate is coated with 150g/m² of aluminum-zinc-magnesium layer, sprayed with 25um powder and 5um paint after plating.

Roof color steel plate



Excellent Structural Strength



The lower house structure of the building adopts steel frame + shear plate, and the columns and beams, wall panels and frame are all connected into a whole, which has excellent overall structural strength.

Easy to install



This product is one of the apartment types of the economic villa series under the PrefabX brand created by PTH. All components are produced by the factory automation and standardization.

The installation process requires low level of professional technology and does not require the assistance of large-scale machinery and equipment. Customers can carry out DIY installation through the equipped installation drawings and enjoy the fun of building a house with their families.



Building overview :

1. House area: 65m² , eaves height:2.44m , indoor net height:2.44m.

2. The house include 3 rooms, 2 halls, 1 kitchen and 2 bathrooms.

3. Design Load :

Wind load : 1.09KN/M²

Snow load : 0.3 KN/M²

Roof dead load : 0.25 KN/M²

Roof live load : 0.5KN/M²

Ceiling dead load : 0.2KN/M²

Ceiling live load : 0.5KN/M²

Material Information :

1. Frame : Wall is integral modular wall + steel frame ; Roof is LGS structure.

2. Roof : 0.5mm color steel sheet , surface coating is AZM100g/m²+ Powder spray paint is 20/5um. Roof insulation is 100mm glass wool + 9mm bamboo wood fiberboard(ceiling).

3. Wall : External wall (9mm fiber cement hang board) + (Shear wall panel : 9mmOSB board + 82mm fireproof wall) +Internal wall (9mm bamboo wood fiberboard) ,The bathroom is waterproof paint+waterproof bamboo wood fiberboard (Marbling) ,assembly at site.

4. Wall : Internal wall (9mm bamboo wood fiberboard) + (82mm fireproof board) + (9mm bamboo wood fiberboard) , The bathroom is waterproof paint+waterproof bamboo wood fiberboard (Marbling) .

5. Floor : PVC lock floor

6. Electrical: Australian Standard

7. Bathroom fittings: Australian Standard, 2 WC seat, 2 shower head, 2 Wash basin

Parameters

House area :	66m ²	Snow load :	0.3 KN/M ²
Eave height :	2.44m	Roof dead load :	0.25 KN/M ²
Indoor net height :	2.44m	Roof live load :	0.50 KN/M ²
Anti Seismic :	Second level (9 degrees)	Durability :	50 years
Wind-resistance :	200km/h (Level 16)	Loading :	40 ft HQ
Wind load :	1.09KN/M ²	other :	